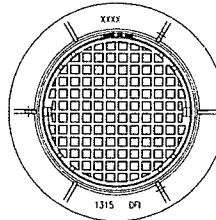


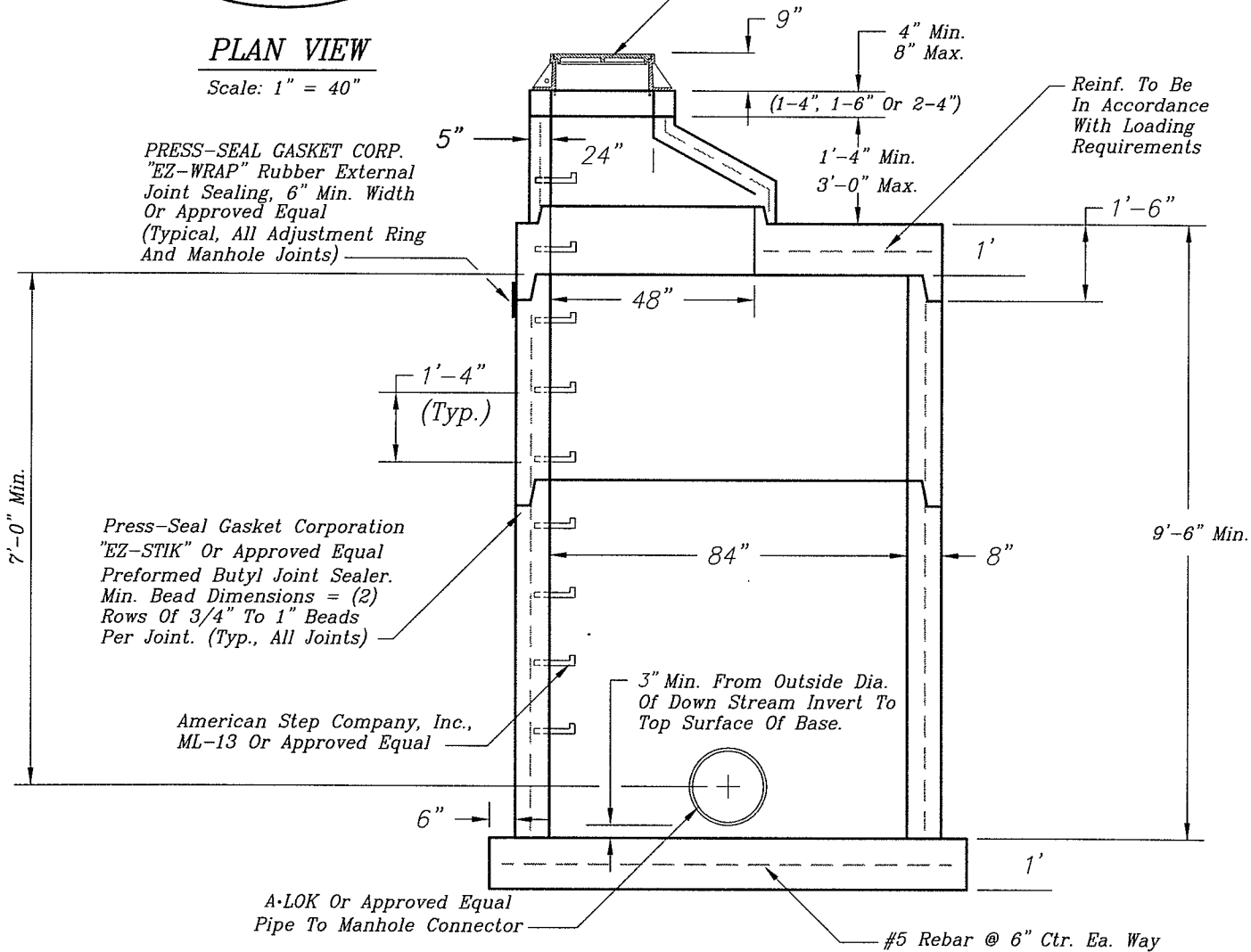
**PLAN VIEW**

Scale: 1" = 40"



Deeter Foundry, Inc.  
#1315  
Or Approved Equal

PRESS-SEAL GASKET CORP.  
"EZ-WRAP" Rubber External  
Joint Sealing, 6" Min. Width  
Or Approved Equal  
(Typical, All Adjustment Ring  
And Manhole Joints)



Reinf. To Be  
In Accordance  
With Loading  
Requirements

Press-Seal Gasket Corporation  
"EZ-STIK" Or Approved Equal  
Preformed Butyl Joint Sealer.  
Min. Bead Dimensions = (2)  
Rows Of 3/4" To 1" Beads  
Per Joint. (Typ., All Joints)

American Step Company, Inc.,  
ML-13 Or Approved Equal

3" Min. From Outside Dia.  
Of Down Stream Invert To  
Top Surface Of Base.

A-LOK Or Approved Equal  
Pipe To Manhole Connector

#5 Rebar @ 6" Ctr. Ea. Way

**MANHOLE SECTION A**

Scale: 1" = 40"

REINFORCEMENT: Steel Wire, Plain ASTM A-82  
: Welded Wire, ASTM A-185  
:(Area .21 in. sq./ft.)  
: 5 Bars @ 6" Centers EW

Precast Manhole Sections Meet or Exceed the Requirements of ASTM C-478

CONCRETE: 4000psi A.E.

PRETECH CORPORATION provides this digital document with the intention of providing the most current information available at the time of this production.

**84" ID MANHOLE WITH REDUCER**

San  
84 WR